



## ***Manistique - a world above***

Manistique is a world above, where verdant greens are transformed with blankets of white, where flowing falls become sculptures in ice, and where gravel roads become spectacular trails.

### **Make it your resolve to make Manistique your winter playground!**



#### **Snowmobile with confidence**

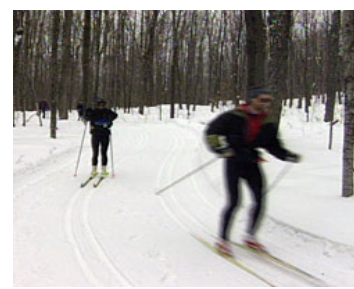
The Schoolcraft County Motorized Trails Association is busy grooming the trails for the general welfare and safety of snowmobile enthusiasts.



Get the latest conditions by visiting its [website](#) or [Facebook](#) page.

## Cross country ski for exercise & fun

You can choose a Skate or a Classic glide on groomed trails or explore the forest off-trail. There are endless opportunities to exercise, explore, and enjoy the outdoors throughout the winter months.



Find ski trails [here](#).

## Come for a world class snowshoe adventure



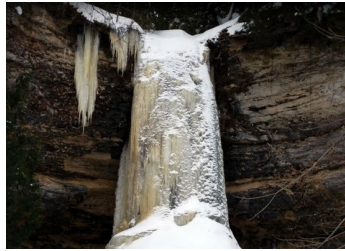
### Bring the family out for ice fishing fun

Bring your tip ups, rods and dress for the weather. Local [bait shops](#) can help equip you and guide you [where to fish](#). If you throw your catch back, [dine at our restaurants](#).

## ATTRACTIONS & THINGS TO DO

If you have experienced the beautiful Manistique area in the spring, summer and fall you must see the breathtaking scenery, historical landmarks, and nature this winter. Cozy up and just relax if that is your pleasure. The Manistique area offers a wide variety of opportunities for vacation fun all four seasons.

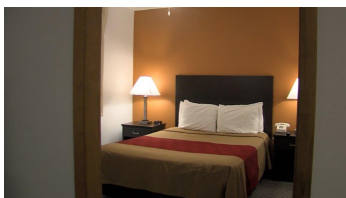
## Attractions in the winter



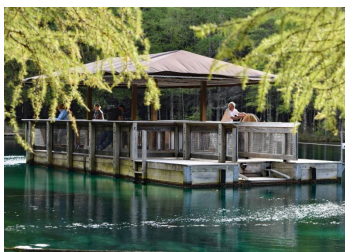
Save the date

February 18 - [McDonald Lake Ice Fishing Derby](#)

July 7-8 - [34th Annual Folk Festival 2023](#)



[Lodging](#)



[Things to do](#)



[Manistique Guide](#)



Share This Email



Share This Email



Share This Email

Manistique Tourism Council | (800) 342-4282 | [info@visitmanistique.com](mailto:info@visitmanistique.com) | [Website](#)

Manistique Tourism Council | PO BOX, Manistique, MI 49854